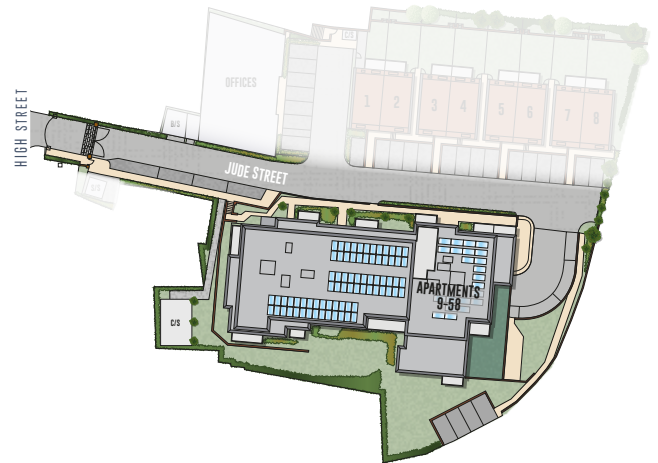


# LIGHTFIELD

HIGH ST. BARNET. LONDON

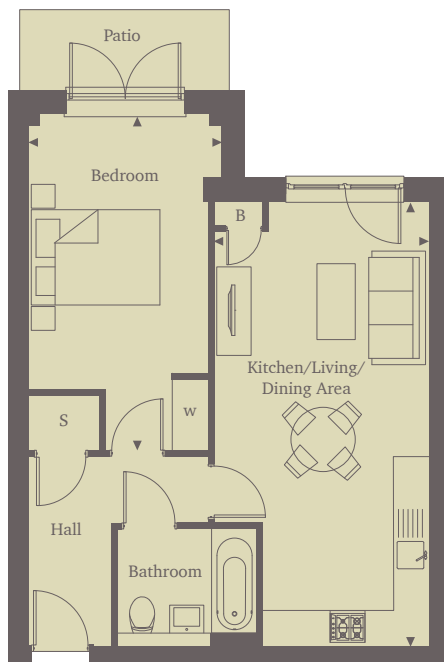


This site plan is a guide for illustrative purposes only. Landscaping shown is indicative only.

## APARTMENT 13 ONE BEDROOM

Embrace modern living in this stylish, ground floor, one-bedroom apartment. Enter via the hallway, featuring ample storage space and leading into the welcoming kitchen/living/dining area. Enjoy entertaining friends and family in this spacious, open-plan room, benefiting from sleek, energy-efficient, integrated kitchen appliances.

The bright double bedroom features a fitted wardrobe and access via French doors to the patio area, an ideal space to enjoy a morning coffee. The luxury bathroom is located just across the hall. Your new home at Lightfield offers all the benefits of a lush green suburb, while being just 30 minutes from the Capital.



### Kitchen/Living/Dining Area

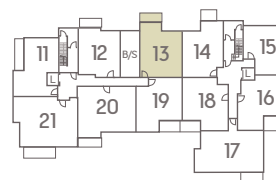
7.30m x 3.50m      24'0" x 11'5"

### Bedroom

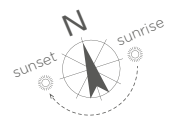
5.60m x 3.20m      18'4" x 10'6"

### Total area

**53.0 sq. mts.      570.50 sq. ft.**



GROUND FLOOR



For more information please call 01494 685825 or [shanlypartnership.com](http://shanlypartnership.com)

◀ Point from which maximum dimensions are measured. Dimensions are intended for guidance only and may vary by plus or minus 7.6cm/3". The plots indicate general layout only which may vary from other plots. Kitchen and bathroom layouts indicative only.

W denotes wardrobe. S denotes storage. L denotes lift. B Boiler.

Please contact sales consultant for more information.

**SHANLY  
PARTNERSHIP  
— HOMES —**