



WATERSIDE QUARTER
MAIDENHEAD

TRE ARCHI APARTMENTS



APARTMENTS 116, 133

Shared Ownership Homes

One bedroom apartments

Situated on either the first or second floor, these stylish one-bedroom apartments include a private terrace or Juliet balcony for you to enjoy. This outdoor space is accessed via French doors leading off from the bright, open-plan kitchen/dining/living area. There is also ample room for a workstation in the living space. Your kitchen has smart, energy-efficient, integrated appliances. Additional Tre Archi home benefits include a linen cupboard, underground parking and electric vehicle charging points.

The double bedroom enjoys a useful fitted wardrobe, with a contemporary bathroom just next door to the bedroom.

Total internal area: 54.49 sq. mts. 586 sq. ft.



WATERSIDE QUARTER MAIDENHEAD

TRE ARCHI APARTMENTS

APARTMENTS 116, 133 ►

One bedroom

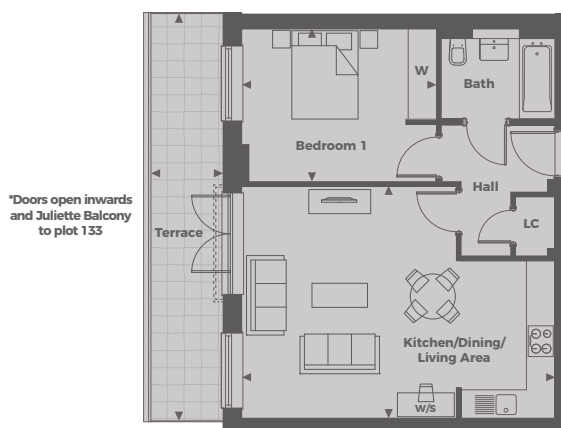
Kitchen/Dining/Living Area
6.60 m x 4.90 m 21'7" x 16'0"

Bedroom 1
4.10 m x 3.20 m 13'5" x 10'5"

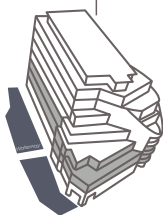
Terrace (Plot 116)
8.54 m x 1.78 m 28'0" x 5'10"

Total Internal Area

54.49 sq. mts. 586 sq. ft.



Tre Archi Apartments



Floor Locator



First Floor



Second Floor

◀ Point from which maximum dimensions are measured. Dimensions are intended for guidance only and may vary by plus or minus 7.6cm/3". The plots indicate general layout only which may vary from other plots. Kitchen and bathroom layouts indicative only. W denotes Wardrobe. LC denotes Linen Cupboard. S denotes Storage. E/S denotes En-Suite. W/S denotes Workstation. (h) denotes Handed. Please contact sales consultant for more information.