

# Oaklands Park

Oaklands Park Littleworth Road | Esher | Surrey | KT10 9PN

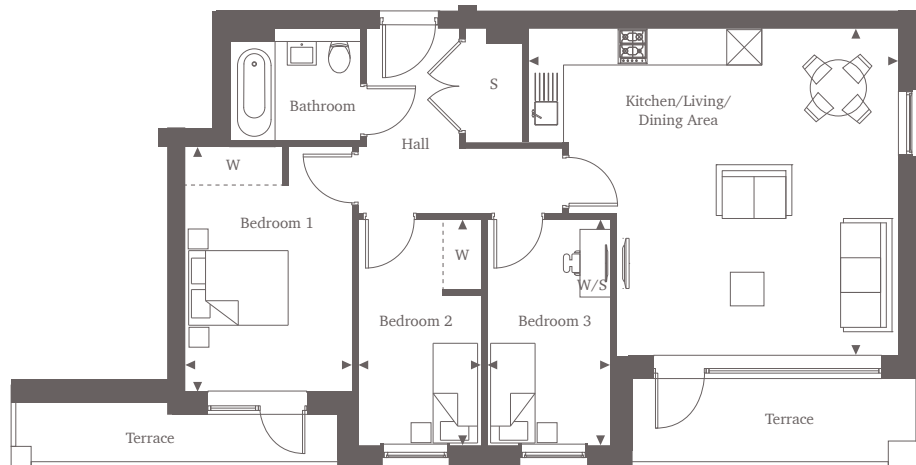


This site plan is a guide for illustrative purposes only. Landscaping shown is indicative only.

## Apartments 11 & 14

### First & Second Floors

Elevate your lifestyle with this impressive three-bedroom apartment, perfectly positioned on the northwest corner of the building. The expansive kitchen and living area provide a remarkable space for entertaining, with a large window and doorway leading to the terrace, seamlessly blending indoor and outdoor living. Two of the three bedrooms are adorned with built-in wardrobes, while the first bedroom enjoys the added luxury of a separate private terrace. As you enter the apartment, the hallway reveals a spacious bathroom and a generously sized storage space.



### Three Bedroom Home 75.40 sq m | 812 sq ft

Kitchen/Living/Dining Area	6.36m x 5.58m*	20'10" x 18'4"
Bedroom 1	4.20m x 2.90m	13'9" x 9'6"
Bedroom 2	3.88m x 2.11m	12'9" x 6'11"
Bedroom 3	3.88m x 2.11m	12'9" x 6'11"

For more information, please call 01372 679 383  
shanlyhomes.com



◀ Point from which maximum dimensions are measured. \* Denotes (max) dimension. Dimensions are intended for guidance only and may vary by plus or minus 7.6cm/3". The plots indicate general layout only which may vary from other plots. Kitchen and bathroom layouts indicative only. S denotes storage. W denotes wardrobe. E/S denotes en-suite. W/S denotes work station. B/S denotes bin store. C/S denotes cycle store. Please contact a sales consultant for more information.