

Oaklands Park

Oaklands Park Littleworth Road | Esher | Surrey | KT10 9PN

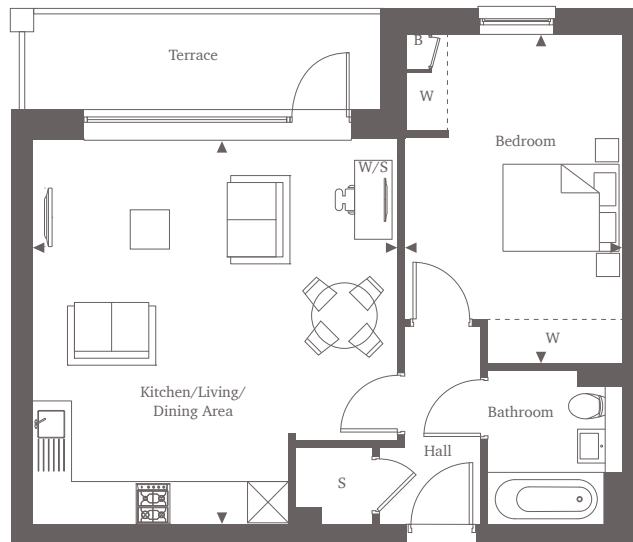
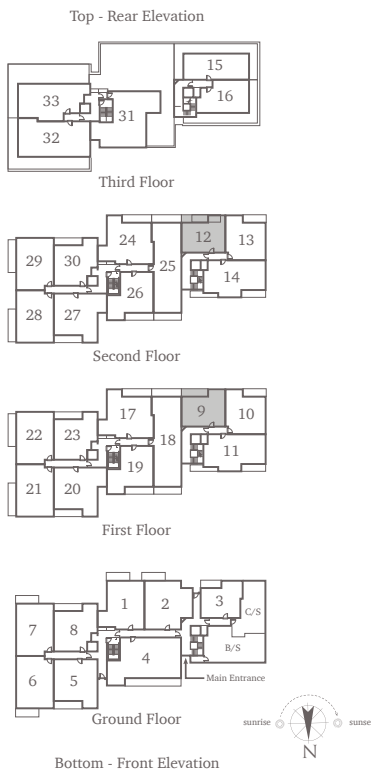


This site plan is a guide for illustrative purposes only. Landscaping shown is indicative only.

Apartments 9 & 12

First & Second Floors

Welcome to a spacious one-bedroom apartment where comfort and elegance converge. The large open plan kitchen and living area are bathed in natural light streaming through a lengthy window, offering a serene atmosphere. Step through the doorway onto the south facing terrace, extending your living space outdoors. The double bedroom is adorned with two built-in wardrobes and a south facing window, ensuring ample storage and natural light. The hallway houses a substantial bathroom and a tucked-away storage space, conveniently located near the entrance.



One Bedroom Home
53.90 sq m | 580 sq ft

Kitchen/Living/Dining Area

5.66m x 5.39m* 18'7" x 17'8"

Bedroom

4.87m x 3.17m* 16'0" x 10'5"

For more information, please call 01372 679 383
shanlyhomes.com



◀ Point from which maximum dimensions are measured. * Denotes (max) dimension. Dimensions are intended for guidance only and may vary by plus or minus 7.6cm/3". The plots indicate general layout only which may vary from other plots. Kitchen and bathroom layouts indicative only. S denotes storage. W denotes wardrobe. E/S denotes en-suite. W/S denotes work station. B denotes boiler. B/S denotes bin store. C/S denotes cycle store. Please contact a sales consultant for more information.