

Oaklands Park

Oaklands Park Littleworth Road | Esher | Surrey | KT10 9PN

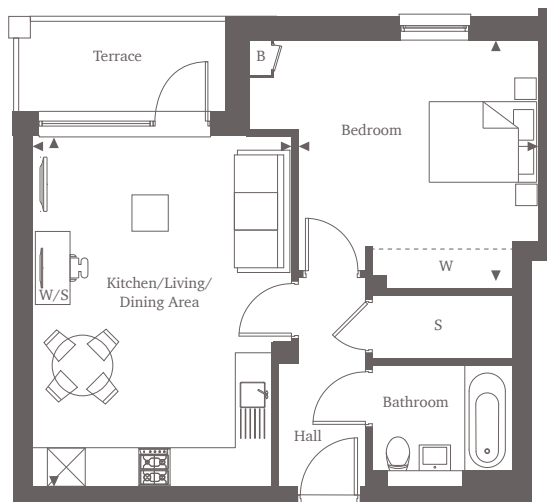
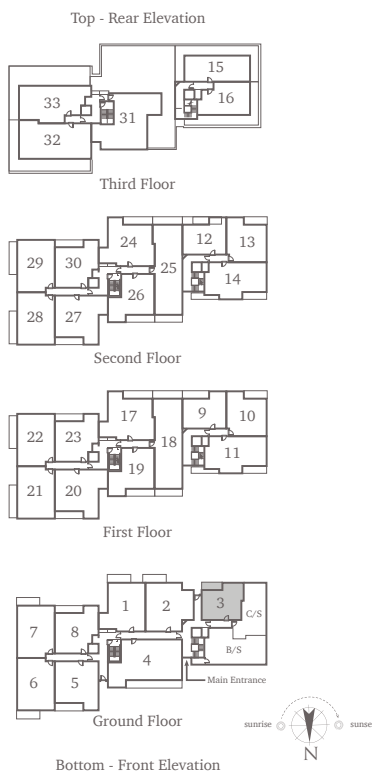


This site plan is a guide for illustrative purposes only. Landscaping shown is indicative only.

Apartment 3

Ground Floor

Step into this ground floor apartment and experience the remarkable combination of spaciousness and style. The open plan kitchen and living area seamlessly integrate, providing a generous space for culinary endeavours and relaxation. The well-appointed bedroom boasts a built-in wardrobe and ample room for a double bed. Adjacent to the entrance, the expansive bathroom awaits, complemented by convenient storage space located nearby.



One Bedroom Home 51.80 sq m | 558 sq ft

Kitchen/Living/Dining Area
5.66m x 4.19m* 18'7" x 13'9"

Bedroom
4.68m x 4.05m* 15'4" x 13'3"

For more information, please call 01372 679 383
shanlyhomes.com

SHANLY
HOMES

◀ Point from which maximum dimensions are measured. * Denotes (max) dimension. Dimensions are intended for guidance only and may vary by plus or minus 7.6cm/3". The plots indicate general layout only which may vary from other plots. Kitchen and bathroom layouts indicative only. S denotes storage. W denotes wardrobe. E/S denotes en-suite. W/S denotes work station. B denotes boiler. B/S denotes bin store. C/S denotes cycle store. Please contact a sales consultant for more information.